

Industrial Gateway Server 2022 from GE Digital

Enable reliable connections to your devices for control, data acquisition, and visualization



Robust, flexible connectivity

Industrial Gateway Server (IGS) from GE Digital is a powerful full-featured connectivity solution that's robust, reliable, and easy to use. IGS is packed with the latest and greatest industry standard protocols, which enable communication to thousands of mixed vendor devices and instruments.

With IGS 2022, you have a comprehensive connectivity solution for GE Digital's HMI/SCADA, MES, and intelligence applications, as well as third-party solutions.

Outcomes

- Easily connect to GE Digital's software and third-party solutions
- Improve reliability with robust connectivity
- Save time with an enhanced interface that enables you to connect quickly
- Leverage control and security with powerful administration tools
- Enhance flexibility with basic drivers and premium options
- Achieve seamless communication with your installed base of equipment and systems
- Ease use with English, German, Japanese, and Simplified Chinese language support

01 Options to drive connectivity further

IGS delivers a basic set of core drivers with an optional premium set that delivers additional specific niche drivers. IGS is available in two editions:

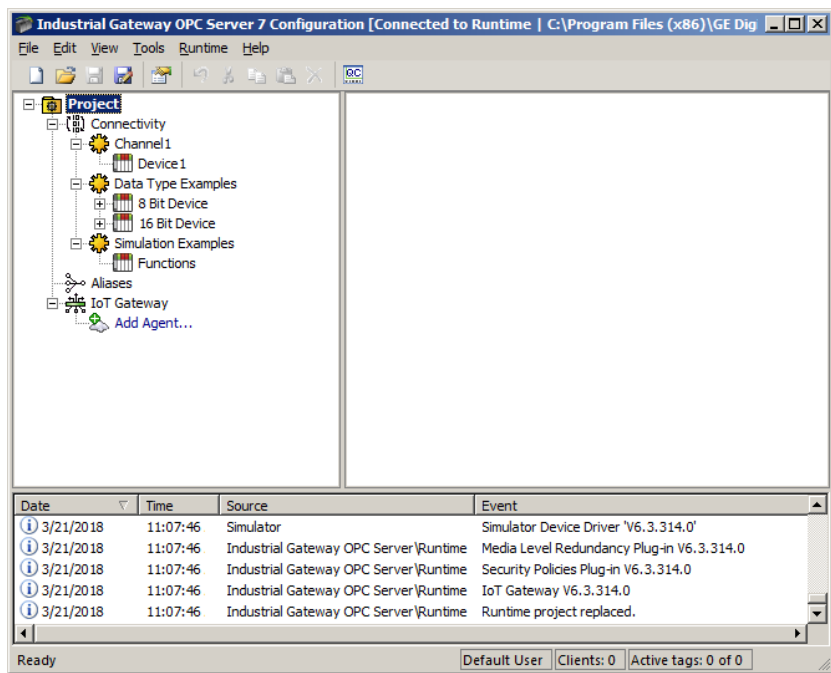
- **IGS Basic Protocol Drivers**
This core offering delivers 100s of protocols for the most common devices in the automation industry. Key drivers in this package include Modbus, OPC, ODBC, Allen Bradley, GE, Honeywell, InTouch, Mitsubishi, Omron, Siemens, Yokogawa, and more.
- **IGS Premium Drivers**
These premium drivers are an individual selection of industry-specific and IT protocols for advanced communications. These include protocols for power, water, oil and gas, and manufacturing.

02 Enhanced easy-to-use interface

The IGS configuration interface is designed to be easy and fast—enabling you to get your communications up quickly. In addition, IGS can be updated offline or online while clients are still connected to devices. This gives you the ability to update your system with minimal disruption—maximizing uptime and minimizing risk.

03 Control and security

IGS introduces a powerful set of administration tools to enhance control over the applicable IGS processes, configuration access, and runtime connection access. In addition to these options, when you're running multiple CPUs, you can specify which processor IGS uses—enabling full control of your system for the most demanding applications. The IGS OPC UA support includes tunneling which simplifies getting secure access to remote OPC DA servers on the same network or through firewalls, avoiding complicated DCOM configuration in Windows.



Industrial Gateway Server 2022 from GE Digital

Enable reliable connections to your devices for control, data acquisition, and visualization

Features

- New in Version 2022: Additional premium drivers including MQTT, DNP and IEC 61850
- New in Version 7.68: IEC 60870-5-104 premium driver, support for the latest ControlLogix firmware (now up to version 32) and includes support for CompactLogix, 100-point license, improved GE/Emerson EGD driver symbolic address support, utilizes latest version of OpenSSL, default of TLS 1.2, 14-character password requirement, default OPC-UA Server security policy now Basic256Sha256 – less secure policies deprecated, certificates expire after 3 years from 10
- Connectivity for hundreds of different devices
- OPC is the leading standard for industrial automation connectivity. IGS supports the OPC Unified Architecture (OPC UA) specification and many of the OPC Classic specifications, including OPC Data Access (OPC DA), OPC Alarms and Events (OPC AE), and OPC Historical Data Access (OPC HDA)
- Native driver for GE Digital's HMI/SCADA solutions and OPC connectivity across GE Digital's software portfolio
- Basic, Premium, and SNMP packaged sets of drivers
- Connectivity to thousands of devices from different vendors
- Ability to run many different protocols and devices simultaneously from a single instance
- Runs in service and interactive mode
- Certified OPC compliant
- Compatibility with GE Digital's iFIX, CIMPLICITY, Proficy Workflow, Proficy Plant Applications, and Proficy Historian software



IGS brings more OPC server control and security to your implementations.

If you're seeking reliable connectivity to your devices for control, data acquisition, and visualization, IGS is the right solution. It's flexible, robust, and easy to use with GE Digital's software and third-party solutions.

LEARN MORE



Industrial Gateway Server 2022 from GE Digital

Enable reliable connections to your devices for control, data acquisition, and visualization

IGS Basic

IGS Basic includes access to all available IGS Basic protocols and use of up to 80 simultaneous protocols per server.

- Advanced Simulator
- Allen-Bradley 1609 UPS
- Allen-Bradley Bulletin 900
- Allen-Bradley CompactLogix
- Allen-Bradley ControlLogix Ethernet
- Allen-Bradley ControlLogix Unsolicited
- Allen-Bradley Data Highway Plus
- Allen-Bradley DF1
- Allen-Bradley Ethernet
- Allen-Bradley Micro800 Ethernet
- Allen-Bradley Micro800 Serial
- Allen-Bradley Unsolicited Ethernet
- Analog Devices
- Aromat Ethernet
- Aromat Serial
- AutomationDirect DirectNET
- AutomationDirect EBC
- AutomationDirect ECOM
- AutomationDirect K Sequence
- AutomationDirect Productivity Series Ethernet
- Beckhoff TwinCAT
- BUSWARE Ethernet
- CODESYS Ethernet
- Contrex M-Series
- Contrex Serial
- Custom Interface
- Cutler-Hammer D50/D300
- Cutler-Hammer ELC Ethernet
- Cutler-Hammer ELC Serial
- Dataforth isoLynx
- DDE Client
- Fanuc Focas Ethernet
- Fanuc Focas HSSB
- Fuji Flex
- GE CCM
- GE EGD
- GE Ethernet
- GE SNP
- GE SNPX
- GE SNP
- GE SNPX
- Hilscher Universal
- Honeywell HC900 Ethernet
- Honeywell UDC Ethernet
- Honeywell UDC Serial
- IDEC Serial
- Intelligent Actuator (IA) Super
- SEL
- InTouch Client
- IOtech PointScan 100
- Krauss Maffei MC4 Ethernet
- Memory Based
- Mettler Toledo
- Micro-DCI
- Mitsubishi CNC Ethernet
- Mitsubishi Ethernet
- Mitsubishi FX
- Mitsubishi FX Net
- Mitsubishi Serial
- Modbus ASCII
- Modbus Ethernet
- Modbus Plus
- Modbus Serial
- Modbus Unsolicited Serial
- MTConnect
- ODBC Client
- Omron FINS Ethernet
- Omron FINS Serial
- Omron Host Link
- Omron NJ Ethernet
- Omron Process Suite
- Omron Toolbus
- OPC DA Client
- OPC UA Client
- OPC XML-DA Client
- Optimation OptiLogic
- Opto 22 Ethernet
- Partlow ASCII
- Philips P8/PC20
- Rockwell Automation - see Allen-Bradley
- SattBus Ethernet
- SattBus Serial
- Scanivalve Ethernet
- Siemens S5
- Siemens S5 3964R
- Siemens S7 MPI
- Siemens S7-200
- Siemens TCP/IP Ethernet
- Siemens TCP/IP Unsolicited
- Ethernet
- Simatic/TI 505 Ethernet
- Simatic/TI 505 Serial
- SIXNET EtherTRAK
- SIXNET UDR
- Square D
- System Monitor
- Telemecanique Uni-Telway
- Thermo Westronics Ethernet
- Thermo Westronics Serial
- TIWAY Host Adapter
- Torque Tool Ethernet
- Toshiba Ethernet
- Toshiba Serial
- Toyopuc PC3/PC2 Ethernet
- Toyopuc Serial
- User Configurable (U-CON)
- WAGO Ethernet
- Yaskawa Memobus Plus
- Yaskawa MP Series Ethernet
- Yaskawa MP Series Serial
- Yokogawa Controller
- Yokogawa CX
- Yokogawa Darwin Ethernet
- Yokogawa Darwin Serial
- Yokogawa DX Ethernet
- Yokogawa DX Serial
- Yokogawa DXP
- Yokogawa HR
- Yokogawa MW
- Yokogawa MX
- Yokogawa YS100

IGS Premium – Optional Drivers

- ABB Totalflow
- Alstom Redundant Ethernet
- BACnet/IP
- Bristol/IP
- DNP
- Enron Modbus
- Fisher ROC Suite
- Fisher ROC Suite (1-10 devices)
- Fisher ROC Suite (11-50 devices)
- IEC 60870-5-104
- IEC 61850
- Lufkin Modbus
- MQTT
- OMNI Flow Computer
- SNMP Suite (1-15 devices)
- SNMP Suite (51+)
- SNMP Suite (16-50)
- Triconex Ethernet
- Weatherford 8500
- WITS Suite

Option for Internet of Things (IoT) Gateway

- An optional plug-in that can be added to an IGS Server to connect Operations with IT to support IoT.
- Provides four agents to stream data over the MQTT, HTTP/REST, and the ThingWorx AlwaysOn protocols.
- Offers advanced message formatting for client agents to support multiple data modeling requirements, such as JSON, XML, CSV, and custom models.

Additional plug-ins (included)

- Thingworx – Enables IGS to be used for Thingworx-based projects
- Security – Security access based on permission. Enable/Disable access to objects, browsing, read/write on tags
- Media Level Redundancy – Communication path redundancy and device pair redundancy

Software requirements

Compatibility with the following:

- Windows Server 2019
- Windows Server 2016
- Windows Server 2012 and 2012 R2
- Windows 10 and 8
- Windows 10 IoT Enterprise

Hardware requirements

- - 2.0 GHz processor
- - 1 GB installed RAM
- - 530 MB available disk space
- - Ethernet Card
- - Super VGA (800x600) or higher resolution video

Note: The optional driver packages do not include the Basic Drivers. These must be purchased separately. Hardware and software requirements are representative and may vary by customer deployment. Please consult the product documentation for more details.



Industrial Gateway Server 2022 from GE Digital

Enable reliable connections to your devices for control, data acquisition, and visualization



Services

In the world of Industrial Internet of Things (IIoT), organizations are able to optimize productivity, reduce costs, and achieve Operational Excellence. No matter where you are on your IIoT journey, GE Digital has the right services offering for you.

[Advisory Services](#) We can help you plan and start your IIoT journey in a way that aligns to your specific business outcomes.

[Managed Services](#) We can help you maintain your critical machines from one of our remote locations around the world using model-based predictive-analytic technology.

[Implementation Services](#) Our experienced global automation partners can implement a collaborative, multi-generational program that marries your existing investments to the right enhancements and technology.

[Education Services](#) We specialize in education services to ensure that you're leveraging our solutions to the fullest extent with our training and certificate programs.

[Acceleration Plans](#) Let us help by ensuring that your business continues to operate at its highest efficiency, all while mitigating risks to your investments.

[Cyber Security Services](#) Our solutions provide industrial-grade security for a wide range of OT network and application topologies.

Related products

GE Digital's [HMI and SCADA](#) suite helps you precisely monitor, control, and visualize every aspect of your operations, enabling operators to make the best decisions faster.



[Proficy Historian](#) →

Optimize asset and plant performance through time-series and A&E industrial data collection and aggregation. Improve decision-making with advanced trend analysis.

[Proficy Operations Hub](#) →

A centralized environment for aggregating and visualizing contextual and situational information for industrial applications—supporting rapid application development and rich displays for faster operational response and better decision making.

Continue your IIoT journey

Transforming your business requires innovative foundational solutions that lay the groundwork for optimized performance.



[Proficy Plant Applications](#) →

Maximize overall equipment effectiveness (OEE), improve production scheduling, and ensure product quality by leveraging real-time production data.



[MTConnect-OPC UA Driver](#) →

Continuously collect real-time data from machine tool equipment for analysis and optimization



[Dream Report](#) →

Powerful reporting to help you improve performance and meet operational goals.

About GE

GE (NYSE: GE) is the world's Digital Industrial Company, transforming industry with software-defined machines and solutions that are connected, responsive and predictive. GE is organized around a global exchange of knowledge, the "GE Store," through which each business shares and accesses the same technology, markets, structure and intellect. Each invention further fuels innovation and application across our industrial sectors. With people, services, technology and scale, GE delivers better outcomes for customers by speaking the language of industry.

©2022 General Electric. All rights reserved. *Trademark of General Electric. All other brands or names are property of their respective holders. Specifications are subject to change without notice. 06 2022

Contact

www.ge.com/digital

